

# Sandgreen Caravan Park

## Spring 2026 Newsletter

---

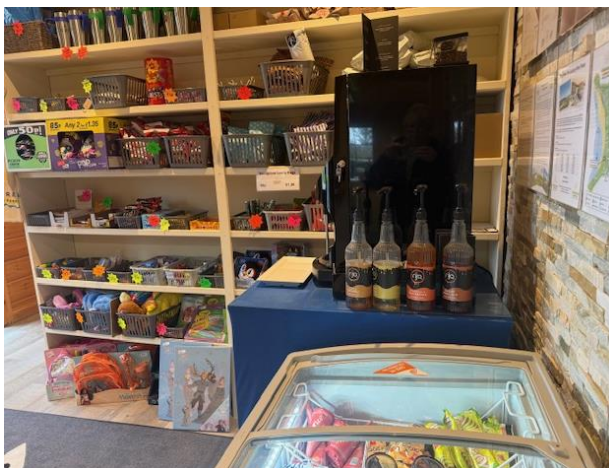


It may be cooler, but Spring has definitely sprung at Sandgreen. It is lovely to see the daffodils popping up around the park, the little lambs jumping around in the fields and the amazing gorse bushes in full, spectacular bloom.

We hope you have all enjoyed your first visits back to Sandgreen, and all had a lovely Easter! The Sandgreen Team were disappointed the weather wasn't on our side this year for the Easter Bonnet Parade but thank you to everyone who came out and braved the weather to show us your amazing bonnets. No matter the weather, we hope you had fun making them – better luck with the weather next year!

With the season in full swing, we wanted to share a spring update, a few important reminders, and what's ahead for the 2026 season.

### **Tuck Shop**



Our Tuck Shop has grown over the last couple of years, and we are delighted to see it continue to be popular, with both children and adults! The Tuck Shop is back up and running and fully restocked with drinks, sweets, crisps, hot drinks, a small selection of toys and pocket money gifts and now a well-stocked ice cream freezer!

## Parks Make Places

Parks Make Places is a nationwide campaign that showcases how holiday parks support communities, drive economic growth and contribute to a more sustainable future.

### Why Parks matter

- **Tourism and economy:** Holiday parks generate £12.2 billion annually for the UK visitor economy, providing jobs and boosting local businesses.
- **Community impact:** Parks help keep vital rural services alive, from funding local transport links to supporting small businesses and running social initiatives like mother-and-baby groups.
- **Environmental leadership:** Parks are investing in carbon reduction, flood resilience, and sustainable infrastructure to help protect the planet.

Sandgreen Caravan Park are delighted to be recognised as a valued member of our local community and HARPA and for our contributions to the community. It is a testament to our shared efforts and commitment to making our park a vibrant, welcoming space for all. Thank you to everyone who has supported us along the way.



We are proud to be supporters of The Gatehouse Gala, Fleet Bay Inshore Rescue, Gatehouse Primary School, Galloway & Southern Ayrshire Biosphere and Play It Green!

## Friends & Family Hire Fleet Discount – Exciting News for You!

We are excited to introduce a new incentive - as many of you are already aware, if your friends or family book a holiday in our hire fleet, they receive a discount if they quote your name and pitch number which is currently 7%. We believe, as a valued Sandgreen customer, you also deserve a special thank you. For every new friend or family member you recommend staying in our Hire Fleet, we will credit your account £15.00! So, if you are looking to host a family gathering or have a get together for a Birthday or Anniversary, booking your friends and family into our hire fleet for a stay is a great solution and it means you can both be rewarded!

## Sandgreen Cleaning Packages



At the start of the season, we were delighted to introduce our new pre-bookable cleaning services, designed to make your stay even more enjoyable. A perfect option for stress-free arrivals, longer stays and a little extra luxury.

Our professional cleaning services can be pre-booked in advance and are subject to team availability.

If this is something you would be interested in, you can choose from:

- ✓ Pre-Visit Refresh – £50
- ✓ Deep Clean – £75
- ✓ Gold Standard Clean – £110

Plus, optional add-ons including exterior window cleaning, deck power washes, and full caravan washes. For more information, advice and to book, please contact Reception.

## Boat Registration – Please Don't Forget

All boats **must be registered** before being brought onto the Park. We require:

- ✓ A completed registration form
- ✓ Copy of valid insurance
- ✓ Registration fee payment

Only then can a beach gate key and sticker be issued. Please also ensure your pitch number is clearly displayed on your boat/kayak.

Unregistered boats will be invoiced following routine park inspections. Kayaks, canoes and small craft up to 10ft are exempt from the fee but still require registration for safety.

## Sales Open Week & Upgrading Your Holiday Home?



Even though the weather had other plans, we had a successful Open Week and it was great to see so many visitors and customers viewing our current stock.

If you've been considering an upgrade, we'd love to help. Our full sales stock is available on our website, or you're welcome to have a no-obligation chat with the team.

Sometimes a simple conversation opens up options you didn't realise were possible!

### Available Sales Stock (At a Glance)

#### Caravans

- ✓ 2025 Swift Provence - **£49,055**
- ✓ 2025 Willerby Lindwood MK2 - **£47,390**
- ✓ 2025 Willerby Rio - **£46,789**
- ✓ 2019 ABI Sunningdale - **£32,800 (Pitch 16)**

#### Lodges

- ✓ 2005 Island Leisure Glenbay (Timber Lodge) - **£65,000 (Pitch 395)**

### Introduce a Friend – Be Rewarded!

Even if you're not upgrading yourself, don't forget our **Introduce a Friend** scheme. If a caravan or lodge is purchased from Sandgreen stock, you could receive:

- ❖ £350 for a pre-owned caravan
- ❖ £750 for a new caravan
- ❖ £1,200 for a lodge

Simply introduce them to Sandgreen and if they go ahead and purchase, you will receive a credit to your customer account.

## Wildlife at Sandgreen & Sandgreen's Wildlife Watch

As you know Sandgreen is a very special place, and this year we really wanted to celebrate our surroundings and the varied wildlife we get to see when at Sandgreen.



This season we have launched:

- “Wildlife at Sandgreen” booklet, full of interesting facts, some of the wildlife you are likely to see at Sandgreen, and some fun activities for our younger customers to enjoy.
- Sandgreen Wildlife Watch Facebook page, where everyone can share videos and photographs of wildlife visiting the Park.
- Sandgreen Wildlife Watch Board – an immersive board where customers and visitors can log the wildlife they have encountered each day.

## Gas Regulators – Updated Health & Safety Guidelines

Following recent guidance issued by the Holiday & Residential Parks Association (formerly British Holiday & Home Parks Association) from Liquid Gas UK, we have been advised that gas regulators should receive an annual check and should be replaced if 10 years of age or over.

As part of the Annual Gas Safety Test carried out on your holiday home at Sandgreen, the regulator on your gas supply will already receive an annual inspection as part of this safety test, however, replacement of regulators once they reach 10 years old, has not, up to now, been included within the requirements of an Annual Gas Safety Test. Now that we have been made aware that this has been introduced into the Health & Safety Guidelines, the age of the regulators will now be checked and assessed each year as standard, with appropriate actions being taken thereafter where necessary.

To comply with this in the immediate term, our Gas Engineer has now completed a full audit to check the age of all gas regulators across the Park. We will very shortly be making direct contact with those customers affected and whose gas regulator falls within the category of requiring replacement now with further information and details on the process and costs involved in replacing the regulator.

If you are worried or concerned about this in any way or think that your regulator falls within the age bracket of requiring replacement and you have not received direct contact from us by Monday 4<sup>th</sup> May 2026, please do not hesitate to contact us and we will be happy to have a chat regarding this.

## Fleet Bay Inshore Rescue Fundraising

We cannot remember a single year during the past 25 years when the Fleet Bay Inshore Lifeboat did not attend a call out in the Sandgreen Bay. To help such a worthy cause we were delighted to become the first Corporate Sponsors and donated £10,000. All monies raised is supporting and helping purchase a new lifeboat, undertake upgrades to the boat house, purchase new kit for the crew, undertake training and purchase a launch vehicle.



Fundraising has been going well, but there is still some way to go, and we will be hosting various fundraising events throughout the season.

- Coast to Coast Cycling Challenge – Sandgreen to Berwick 30<sup>th</sup> – 31<sup>st</sup> May 2026. 130 mile challenge or join anywhere along the route and ride a section that suits you. Do as little or as much as you like, every mile counts! Entry is £10 per ride and entries close at end of April.
- Raffle – A fabulous print painted by one of our talented customers has been donated to raise more money for this worthy cause. Raffle tickets can be purchased from Reception, and the draw will be made the weekend of Coast to Coast Cycling Challenge.
- Bake Sale & Raffle – Sunday 19<sup>th</sup> July. More information attached.

## A Few Important Reminders

- ❖ **Park Rules:** Please refresh yourself for the new season.
- ❖ **Speed Limit:** 10pmh maximum – repeat offenders risk licence withdrawal.
- ❖ **Dogs:** On leads at all times on the park (beach only, 9:00pm to 8:00am off lead).
- ❖ **Drones:** Flying of drones is not permitted on Sandgreen
- ❖ **Fire Safety:** Check all alarms and locate nearest fire point.
- ❖ **Gas Safety & Insurance:** Please keep certificates up to date.
- ❖ **Proof of Residential Address:** Required annually (please send ASAP if not already submitted to our office for this year).
- ❖ **Gas & Electricity Meters:** Going forward our team will be reading your gas and electricity meters at the end of every month, beginning 30<sup>th</sup> April. Invoices for your individual usage will be sent by the middle of the following month.
- ❖ **Tents:** As per our Park Rules, please remember tents are not permitted anywhere on Sandgreen.
- ❖ **Park Entrance:** We know the park entrance can be a popular place for children to gather; however, it is also one of the most dangerous areas. Vehicles – whether delivery drivers, visitors, or other customers – often come around the corner quickly, and visibility can be limited. If you have children, please speak with them and ensure they do not play near the entrance under any circumstances.
- ❖ **Buoys:** Please refresh yourself with the clearly identified lanes in the water at Sandgreen. There are three lanes, the lane closest to the Park entrance is for power boats, the middle lane is for sail boats/kayaks/canoes/paddleboard, and the furthest away lane is for swimming. If, at any time, buoys have become detached/missing, please let the office know as soon as possible – the buoys are here for everyone’s safety, and should not be removed.

## Did You Know?

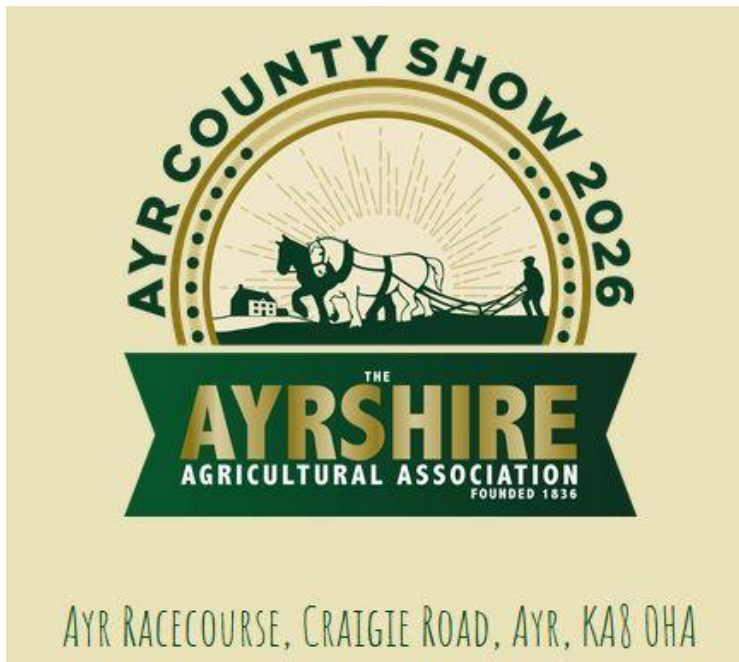
Did you know that.....

Swallows generally return to Sandgreen in late April, with many arriving around the 20<sup>th</sup>-22<sup>nd</sup> of the month. It’s been lovely to see some of these wee birds arriving back, especially knowing the long journey they will have had all the way from Africa. It won’t be long before the outside reception area is home until October, at the latest to a whole new brood.



## Looking Ahead

### Ayrshire Show – Saturday 9<sup>th</sup> May



Join Sandgreen Caravan Park on Saturday 9<sup>th</sup> May at the Ayr Racecourse, for the 2026 Ayr County Show.

Come along and say hello to Jan and Pete, who will be exhibiting in the Food/Craft/Retail marquee.

### Sales Open Weekend – Saturday 16<sup>th</sup> & Sunday 17<sup>th</sup> May 2026

Join us on the 16<sup>th</sup> & 17<sup>th</sup> May, for our second Sales Open Weekend of 2026. Come along and view amazing holiday homes at even better prices, range of brand new and pre-owned available and special show offers – the perfect time to buy in time for your new dream holiday caravan at Sandgreen to be ready for you to enjoy a summer like no other!

Our team will be on hand to help you with any queries you may have, assist you with the options on upgrading your holiday home at Sandgreen if this is something you are looking to do this year, and of course, be available to show you around our stunning sales stock.

We would be delighted to see you there!



## Sandgreen Craft Morning – 24<sup>th</sup> May 2026

Come and join Sally & Jules for a fun-filled craft morning at Sandgreen! From 10:30am to 12noon, your children will have the chance to create some Sandgreen inspired art. All materials will be provided, so there's no need for anyone to bring anything with them.

If you fancy making a shell-inspired picture or painting what you enjoy most about Sandgreen, we'd love to see your children's creativity. This event is open to children aged 5 to 12, and we look forward to seeing their imaginations run wild.

If you would like your child to join in the fun, please let us know by Monday 11<sup>th</sup> May by emailing [info@sandgreencaravanpark.co.uk](mailto:info@sandgreencaravanpark.co.uk). Weather permitting, all activities will take place outside the main Sandgreen Reception – Let's get creative together!



## **Bake Sale – Sunday 19<sup>th</sup> July 2026**

Calling all bakers! We would love you to take part in the Sandgreen Bake Sale on Sunday 19<sup>th</sup> July. So, whether you're a seasoned pro or just enjoy a bit of home baking, your contributions will really make this event a success. As part of our charity campaign this year, the Bake Sale & Raffle are being held to raise funds for the Fleet Bay Inshore Rescue.

We welcome cakes, biscuits, traybakes, and any other tasty treats you'd like to donate and would ask that any donations are dropped off at the office at 9.00am, so we can set everything up for 10:00am. There will also be a tempting raffle with fantastic prizes up for grabs.

Come along, bring your best bakes, and help support a worthy cause – we look forward to seeing you there!



**COMING SOON..... Sunrise Corner!**



Coming soon to Sandgreen – Sunrise Corner! Imagine arriving at your holiday home, no maintenance to think about, no rushing around, just peace, quiet and time to enjoy Sandgreen. Well, that is exactly what Sunrise Corner is all about.

We are excited to bring you a brand-new development at Sandgreen, designed for easy, stress-free holiday living – perfect for those looking to truly unwind.

#### **Why Choose Sunrise Corner?**

- ✚ Piped gas – no more changing gas bottles
- ✚ Over 60's community – peaceful, likeminded neighbours
- ✚ Private Parking & Storage Shed
- ✚ Fully maintained level grounds
- ✚ Decking, walkway and ramp access included
- ✚ Support from our Team whenever you need it.

More details will follow but if you have any questions or wish to register your early interest please contact Reception.

Thank you for taking the time to read this update. We're very much looking forward to another enjoyable season at Sandgreen and as always, the team are here to help – please pop in for a chat any time.

Warmest wishes,  
**The Sandgreen Team**

**Sandgreen Caravan Park**  
**Gatehouse of Fleet, Dumfries & Galloway, DG7 2DU**  
**Tel: 01557 814351**  
**Email: [info@sandgreencaravanpark.co.uk](mailto:info@sandgreencaravanpark.co.uk)**  
**<https://www.facebook.com/sandgreencaravanpark>**  
**<https://www.instagram.com/sandgreencaravanpark1>**  
**[tiktok.com@sandgreen.caravan](https://www.tiktok.com/@sandgreen.caravan)**

